


STONE VALLEY MIDDLE SCHOOL

Home of the Pride





Our thanks to the community for supporting Measure D which funded our new classroom buildings!

Stone Valley students connecting with each other on their way to their Access classes



Math CAASPP Data Review

Year	Hispanic Students	Grade	Cohort	Grade	Cohort	Grade	Cohort
2017	55	6 th	68				
2018	78	7 th	77	6 th	68		
2019	61	8 th	73	7 th	71	6 th	63
2020	TBD	9 th	-4	8 th	+3	7 th	TBD

3589793238462

1 44-44 6 44-44
2 (4-4)(-4) 7 44-44
3 (4+4)-4 8 (4-4)(-4)
4 4+4-4-4 9 44-44
5 (4 x 4 + 4) - 4 10 (4-4)(-4)
Eddie Maxson

4 +
x -

1 44-44 6 44-44
2 44-44 7 44-44
3 44-44 8 44-44
4 44-44 9 44-44
5 44-44 10 44-44

1 2 3
4 5 6
7 8 9 10

Math Goal #1

The percentage of students with disabilities scoring proficient or higher in Math (concepts and procedures is an area of defined struggle) will increase from 21% to 41% (+20) by the end of the school year as measured by essential standards common assessments administered in class, Access (reteach/reassess) and CAASPP.

Math Goal #2

The percentage of hispanic students scoring proficient or higher in math will increase from 61% to 75% by the end of the school year as measured by essential skills common assessments, Access (reteach -reassess) and CAASPP.

ELA Cohort Data Review

Year	SWD	Grade	Cohort	Grade	Cohort	Grade	Cohort
2017	33	6 th	81				
2018	42	7 th	87	6 th	76		
2019	39	8 th	72	7 th	76	6 th	77
2020	TBD	9 th	-15	8 th	----	7 th	TBD

English Language Arts



The percentage of students with disabilities scoring proficient or higher in English Language Arts will increase from 39% to 49% (+10) by the end of the 2019 -20 school year as measured by essential standards common assessments administered in class and during Access (reteach/reassess) and CAASPP.

Social & Emotional Learning

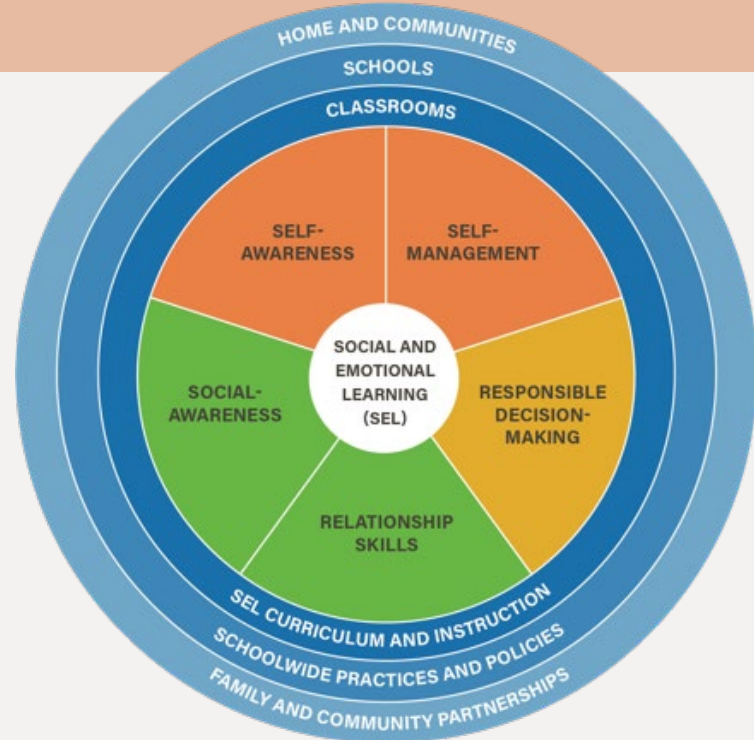
Building Community

Mindfulness

SBG, GRIT, Field Day

Expectations

Connections



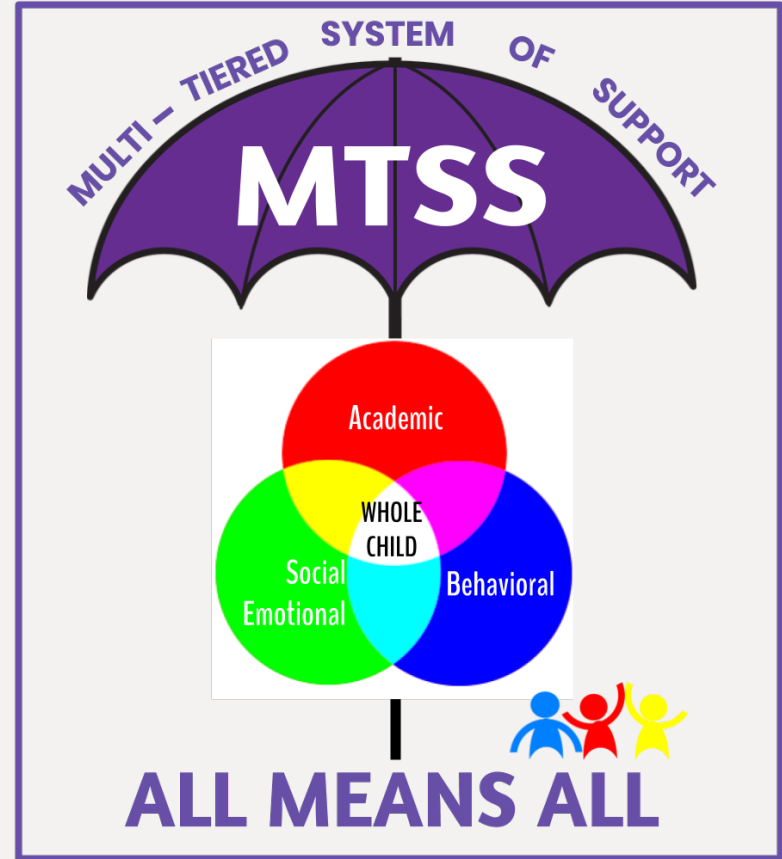
Social & Emotional Learning Goal



The percentage of students scoring 3 or 4 in caring adult relationships will increase from 71% to 85% by the end of the school year as measured by CHKS administered in class.

SRVUSD Leadership Priority

Multi -Tiered System of Support to Ensure that Each Student Reaches High Levels of Success



STONE VALLEY
MIDDLE SCHOOL
MTSS

What are the 4 Questions of PLCs?

1. What do we want students to learn?
2. How do we know students have learned it?
3. What do we do when students don't learn it?
4. What do we do when students learned it/already know it?



Thank you!